

3. Population and Employment

3.1 POPULATION GROWTH

The population of Ranchi was 25,970 in 1901, which crossed the one-lakh limit in 1951. The population of Ranchi Municipal Corporation Area in 2011 was 10,73,440. The following table provides the growth of population in Ranchi and its constituent areas. **Refer to Table No. 3.1.**

Table No. 3-1: Growth of population in State, District and City: 1961 to 2011

Year	Jharkhand State		Ranchi District		Ranchi City	
	Population	Decadal Growth (%)	Population	Decadal Growth (%)	Population	Decadal Growth (%)
1961	1,16,06,000	19.69	21,38,565	15.86	1,40,253	31.26
1971	1,42,27,000	22.58	26,11,445	22.11	2,55,551	82.21
1981	1,76,12,000	23.79	30,70,432	17.58	4,89,626	91.60
1991	2,18,44,000	24.03	22,14,048	-27.89	5,99,306	22.40
2001	2,69,45,829	23.36	27,85,064	25.79	8,46,454	41.24
2011	3,29,66,238	22.34	29,12,022	4.56	10,73,440	26.72

Source: Census of India, 1961-2011

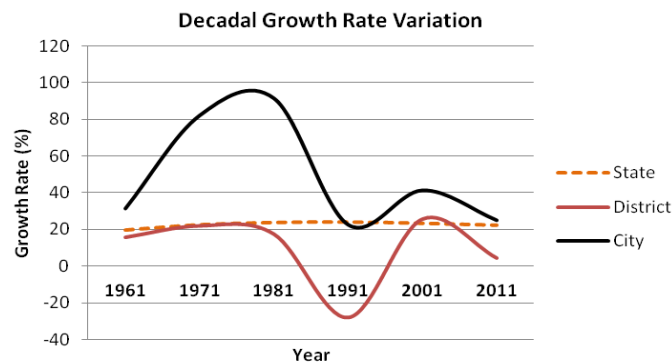


Figure No. 3-1: Decadal Growth Rate Variation

3.2 POPULATION ESTIMATES

Based on the past population growth trends i.e. low, medium and high – population estimates for Ranchi Urban Area and Rural Villages in Ranchi Planning Area (RPA) for the period 2012 to 2037 have been separately worked out. It is estimated that the population of RPA (combination of urban and rural population) may vary from low of 21.12 lakhs to a high of 36.94 lakhs in 2037. A medium projection of 31.58 lakh for RPA for the perspective year 2037 is adopted and the same is used for the planned development of Ranchi Planning Area. Five yearly estimates of the population are given. **Refer to Table No. 3.2.**

Table No. 3-2: Population Estimates in RPA – 2037 at 5 yearly intervals

Year	Population in RMC Area	Population in Villages	Population in RPA
2011	10,73,440	3,83,133	14,56,528
2012	11,05,183	3,94,278	14,99,461
2017	12,78,546	4,58,990	17,37,536
2022	14,79,104	5,38,676	20,17,780
2027	17,11,122	6,33,336	23,44,459
2032	19,79,536	7,42,972	27,22,508
2037	22,90,054	8,67,582	31,57,636

Source: Estimates of the Consultant

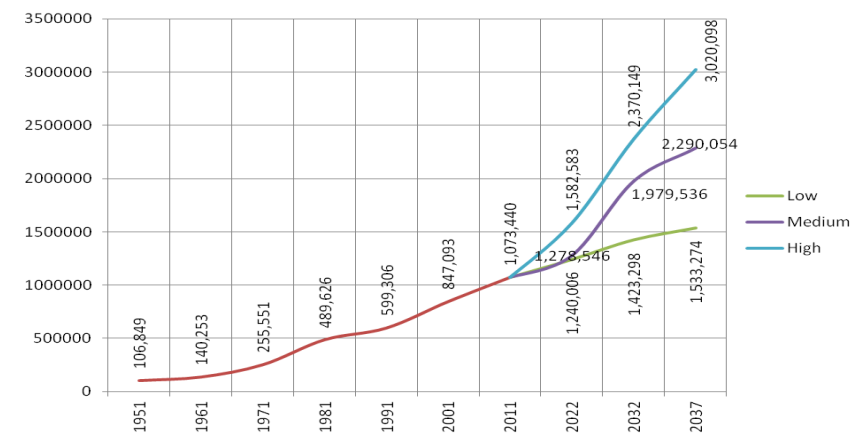


Figure No. 3-2: Population Projection of Ranchi City (RMC Area)

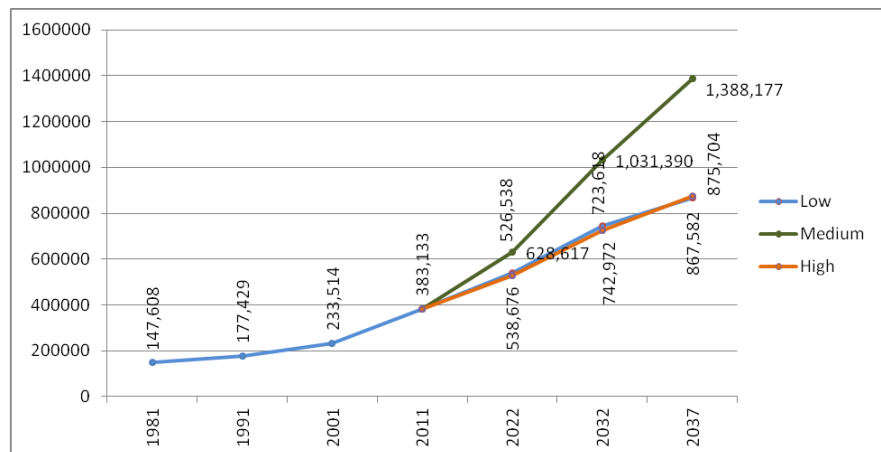


Figure No. 3-3: Population Projection of Villages within Ranchi Planning Area

3.2.1 Floating Population

It is observed from the survey that besides the normal population housed in the city, there is a floating population of about 10 %, which comes to Ranchi Planning Area for daytime activities. Thus, the daytime population in Ranchi in 2037 is estimated at 34.73 lakh.

3.3 GREATER RANCHI

A new capital city with estimated population of 5-lakhs on an area of 123 Sq. kms is in design and development stage. The city is proposed to be designed with capital functions, multi-sectoral facilities, trade & commerce, industrial, residential and other functional areas. The initial phase (i.e. 15-20 years) of Greater Ranchi will mostly be a construction phase with a population growth in phased manner. Thus, the Ranchi Master Plan-2037 envisages the impact of Greater Ranchi will be in next Master Plan period.

3.4 AGE-SEX COMPOSITION

Study of Age-Sex composition of population shows that the Ranchi city has 11.39 % of population in 0-6 year's age group in comparison of 13.42 % figure of year 2001. There is a reduction of 2.03 % in 0-6 year's age-group population of the city since 2001. The proportion of population in the working age group 15-64 and old age group 65+ is increasing. This is indicative of the increase in the participation rate and need of health infrastructure and recreational activities.

Table No. 3-3: Age Sex Composition - 2001

Area	Population			Age group (0-6 years)			
	Total	%	%	Male	%	Female	%
Ranchi City	8,47,093	1,13,699	13.42	58,722	51.65	54,977	48.35
Kanke (CT)	16,402	2,105	12.83	1,093	51.92	1,012	48.08
Ranchi UA	8,63,495	1,15,804	13.41	59,815	51.65	55,989	48.35
Ranchi Urban	9,77,821	1,33,375	13.64	68,855	51.63	64,520	48.37
Ranchi District	27,85,064	4,61,085	16.56	2,35,126	50.99	2,25,959	49.01

Source: Census of India, 2001

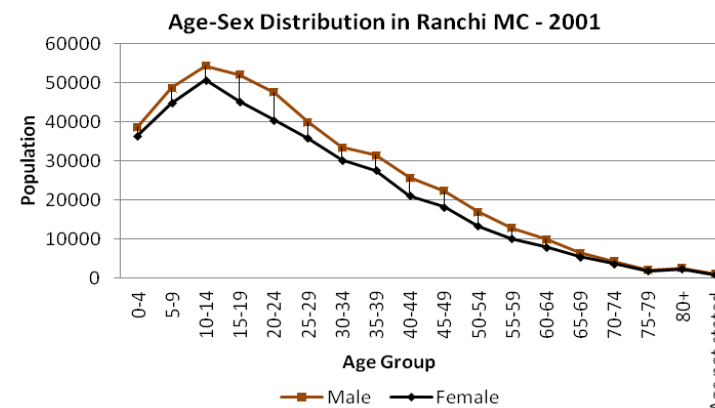


Figure No. 3-4: Age-Sex Distribution in RMC

3.5 POPULATION DISTRIBUTION

The total projected population, 31.57 lakh will be accommodated within the present Ranchi Planning Area (RPA). Planning-Unit wise distribution of the population is given in **Table No. 3.4**.

Table No. 3-4: Population Distribution in RPA by Planning Unit - 2037

Planning Unit	Residential Area 2037 (HA)	Population 2011	Population 2037
1	1299.8	2,09,660	328975
2	350.71	1,54,163	158695
3	735.32	69,901	185962
4	1334.61	95,293	337523
5	1090.72	1,26,136	275843
6	699.82	59,893	176984
7	784.28	85,352	198330
8	676.09	38,226	120982
9	277.8	40,900	50000
10	756.74	74,101	191380
11	1396.34	2,04,521	352939
12	204.87	19,063	51823
13	1530.5	1,31,922	387062
14	1348.92	1,47,397	341138
Total	12486.50	14,56,528	31,57,636

Source: Consultant's Analysis

Refer Map No. 3.1 for Planning Unit (PU) wise Population

The distribution of population in planning districts A, B, C, D, E, F and G for the year 2037 is given in **Table 3.5**.

Table No. 3-5: Population Distribution in RPA by Planning District - 2037

District	Population 2037
A	4,28,204
B	4,81,035
C	4,13,000
D	3,69,990

District	Population 2037
E	4,74,210
F	4,98,865
G	4,92,331
Total	31,57,636

3.6 EMPLOYMENT DISTRIBUTION - 2037

For estimates and geographical distribution of employment for the year-2037 refer to the Chapter-4 on "Economic Base and Work Areas".